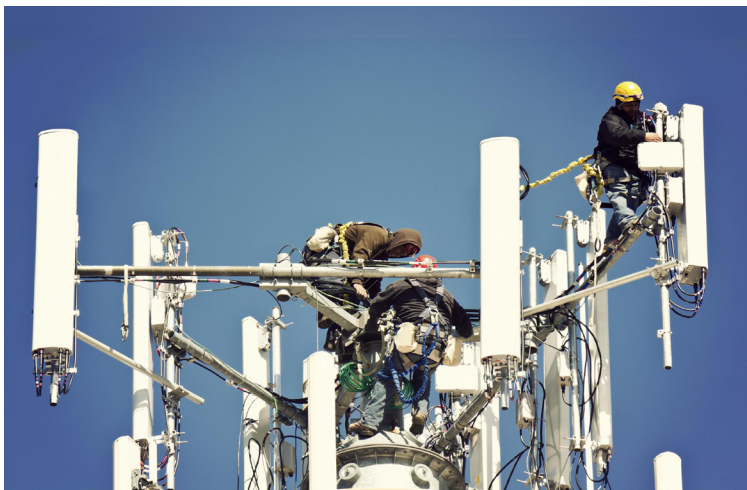


## OHCS for FTTA Applications

Cables Unlimited, a division of RF Industries, OptiFlex™ hybrid cable with OHC connectors offer efficient and reliable solutions for FTTA applications. The OHC plug can connect directly to the RRH with the bulkhead receptacle or connect to another hybrid cable with cable receptacle.



### Features:

- Combines power and fiber into a single cable with a single connection.
- 1-12 fiber cables and 1-3 power cables of 8-16 AWG.
- Integrated MPO or MU fiber connector.
- Single mode or multimode fiber cable.
- Armored, flexible corrugated cable.
- Weather sealed, water proof.
- UV-resistant, Rodent proof.
- Optional individual cable breakout

### Benefits:

- Factory assembled by Corning certified technicians.
- Reduces installation time, mistakes and expense.
- Blocks contamination from dirt and outside elements.
- Eliminates installation damage.
- Minimizes maintenance and repair costs.

*Note: Specifications subject to change without notice  
OptiFlex is a trademark of RF Industries*



### Mechanical

Housing and backshell	thermoplastic UL94-V0
Insert	thermoplastic UL94-V0
Optical contacts	depends on LC customer choice
Durability per IEC 61300-2-2	500 mating/unmating
Vibration per IEC 61300-2-1	Sinusoidal vibration, 5Hz to 500Hz, 3.5mm amplitude, 9.8m/s <sup>2</sup> above 9Hz
Temperature variation per IEC 61300-2-22	12 cycles 1hour, from -40°C to +85°C

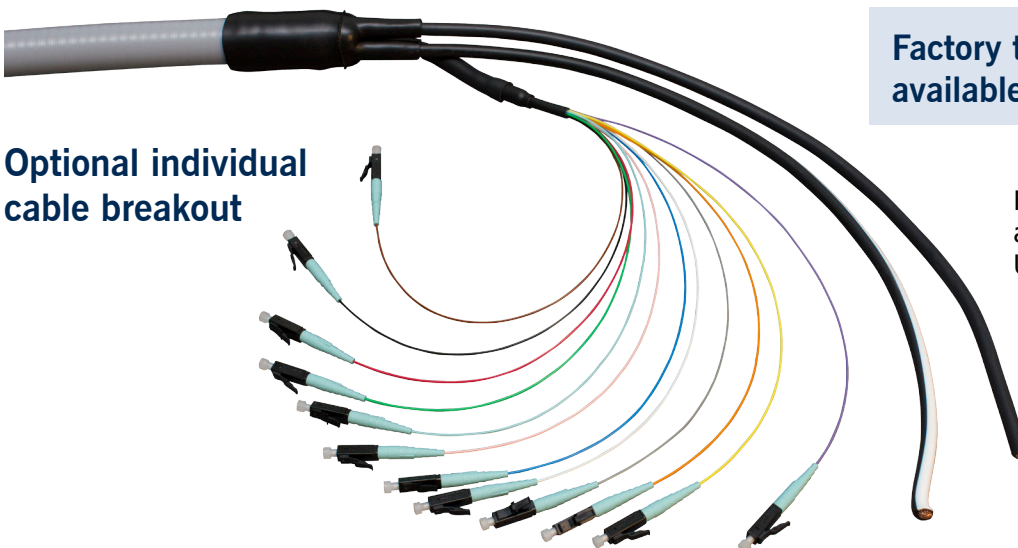
### Environmental

Temperature range:	from -40°C to +105°C
Salt mist per IEC 61300-2-26	96 hours
Sealing (mated) per IEC 60529	dynamic IP68 under water for 1week, 1bar
UV resistance	no mechanical degradation or significant variation of color after 5 years of exposure in natural environment (equivalent exposure to sun and moisture as per ISO4892)

### Optical

*depends on MPO and MU contacts customer choice*

Performances	exceeding IEC 61753-1 standard Cat. E (extreme environment)
Multimode contact	insertion losses < 0.10dB over 97% of the samples Return losses > 30dB minimum
Singlemode contact	insertion losses < 0.25dB over 97% of the samples Return losses > 45dB minimum



### Optional individual cable breakout

**Factory terminated cable assemblies available from Cables Unlimited**

For configuration, part numbers and costs, contact Cables Unlimited with your requirements



*Note: Specifications subject to change without notice  
OptiFlex is a trademark of RF Industries*