

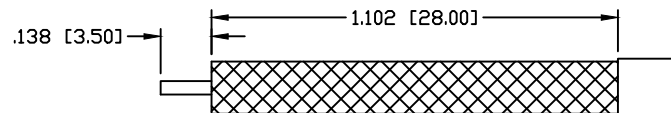
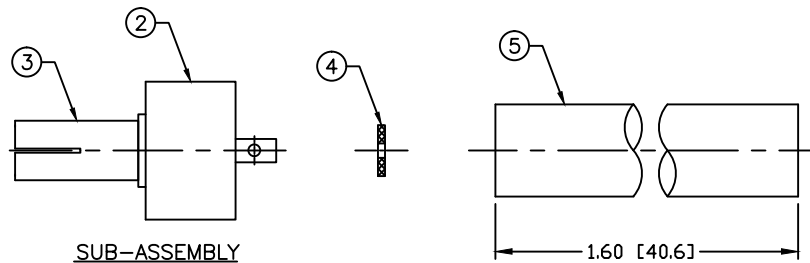
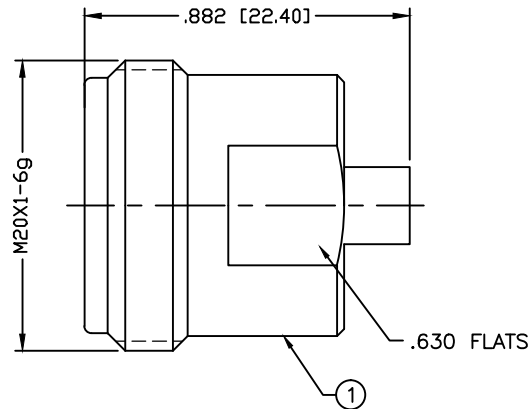
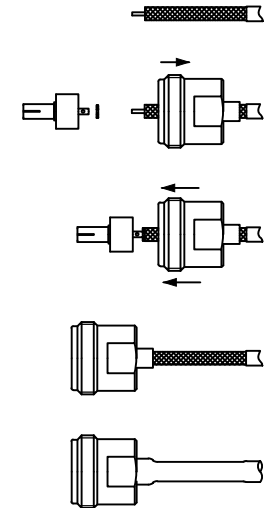
PART NO.

**RFD-4195F-SR2**

REV	DESCRIPTION	DWN	DATE	APPROVED
-	ENGINEERING RELEASE	CZS	02/25/15	JDMc

## ASSEMBLY INSTRUCTIONS:

- Step 1: Cut end of cable evenly. Strip cable to dimensions as shown. All cuts are to be clean and square. Do not nick center conductor when cutting.
- Step 2: Place heat shrink tubing and connector body onto cable.
- Step 3: Slide spacer and contact subassembly onto cable center conductor until it yields against the cable dielectric. Solder contact in place.
- Step 4: Press subassembly into body until dielectric yields against the back of the connector. Solder connector and cable outer conductor in place.
- Step 5: Move tubing over until it yields against connector back end and heat shrink.



## SPECIFICATIONS:

IMPEDANCE: 50 Ohms  
 FREQUENCY RANGE: 0-3 GHz  
 VSWR: <1.15:1 THRU 3GHz  
 DIELECTRIC WITHSTANDING VOLTAGE: 750V/AC  
 PIM: ≤-155 dBc  
 INSULATION RESISTANCE: 5000MΩ  
 TEMPERATURE RANGE: -40°C TO 155°C  
 MECHANICAL DURABILITY: 500 CYCLES  
 FOR .141 SEMI RIGID, RG-402/U & BELDEN 1673A CABLE

5	TUBING	1	HEAT SHRINK	---
4	SPACER	1	PTFE	---
3	CONTACT	1	BeCu	SILVER
2	INSULATOR	1	PTFE	---
1	BODY	1	BRASS	WHITE BRONZE
#	DESCRIPTION	QTY	MATERIAL	FINISH

CUSTOMER OUTLINE DRAWING	
ALL DIMENSIONS ARE REFERENCE ONLY	
UNLESS OTHERWISE SPECIFIED: DIMENSIONS ARE IN INCHES AND [MILLIMETERS]	
DRAWN C. ZUNIGA	02/25/15
CHECKED	
ORJ DRAWN C. ZUNIGA	02/25/15

**RoHS  
COMPLIANT**

PROPRIETARY AND CONFIDENTIAL  
 THIS DRAWING CONTAINS  
 INFORMATION PROPRIETARY TO  
 RF INDUSTRIES, ANY  
 UNAUTHORIZED USE OF THIS  
 DRAWING IS EXPRESSLY  
 PROHIBITED WITHOUT WRITTEN  
 PERMISSION FROM RF  
 INDUSTRIES. ANY VIOLATION IS  
 PUNISHABLE UNDER U.S.  
 COPYRIGHT LAWS.

**RFconnectors**  
 DIVISION OF RF INDUSTRIES, LTD.

7610 MIRAMAR RD.  
 SAN DIEGO, CA 92126  
 (858) 549-6340  
 (858) 549-6345 FAX

**4.1-9.5 JACK SOLDER**

SIZE A	CABLE GROUP SR2	DWG NO. <b>RFD-4195F-SR2</b>	REV ---
SCALE: NTS	ENGINEERING ID: 000000	SHEET 1 OF 1	