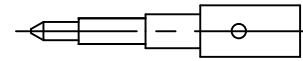
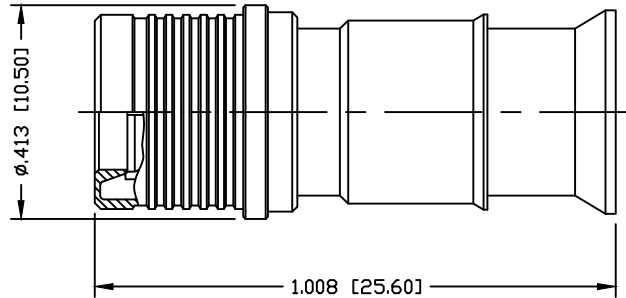


PART NO.

ROA-5000-HPL

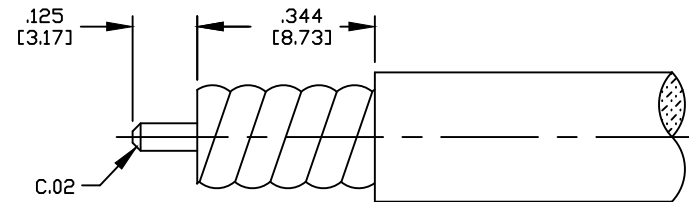
REV	DESCRIPTION	DWN	DATE	APPROVED
A	CHANGE PIN PLATING	CZS	11/04/19	JDMc



SOLDER PIN



REAR INSULATOR



RECOMMENDED STRIPING DIMENSIONS

USE OF CABLE TRIM TOOL IS RECOMMENDED

USE COMPATIBLE TRIM TOOL SUCH AS MCPT-1412

SPECIFICATIONS:

IMPEDANCE: 50 Ohms

FREQUENCY RANGE: 0-3 GHz

VSWR: ≤1.15

3RD ORDER IM: ≤155dBc @ 700 MHz

INSULATION RESISTANCE: 5k M Ohms min.

TEMPERATURE RANGE: -40°C TO 165°C

RoHS COMPLIANT

CABLE TYPE: SPP-250-LLPP

#	DESCRIPTION	QTY	MATERIAL	FINISH
6	GROUND RING	1	PHOS. BRONZE	WHITE BRONZE
5	SHELL	1	BRASS	WHITE BRONZE
4	PIN	1	BRASS	SILVER
3	INSULATOR	1	PTFE	---
2	INSULATOR	1	PTFE	---
1	BODY	1	BRASS	WHITE BRONZE

CUSTOMER

OUTLINE DRAWING

ALL DIMENSIONS
ARE REFERENCE ONLYUNLESS OTHERWISE SPECIFIED:
DIMENSIONS ARE IN INCHES
AND [MILLIMETERS]

DRAWN	C. ZUNIGA	11/04/19
CHECKED		
ORJ DRAWN	C. ZUNIGA	06/08/16

**RoHS
COMPLIANT**

PROPRIETARY AND CONFIDENTIAL
THIS DRAWING CONTAINS
INFORMATION PROPRIETARY TO
RF INDUSTRIES, ANY
UNAUTHORIZED USE OF THIS
DRAWING IS EXPRESSLY
PROHIBITED WITHOUT WRITTEN
PERMISSION FROM RF
INDUSTRIES. ANY VIOLATION IS
PUNISHABLE UNDER U.S.
COPYRIGHT LAWS.

RFconnectors7610 MIRAMAR RD.
SAN DIEGO, CA 92126
(858) 549-6340
(858) 549-6345 FAX**QMA PLUG**

FOR .250" SPP-250-LLPL CABLE

SIZE	CABLE GROUP	DWG NO.	REVISION
A	N/A	ROA-5000-HPL	A
SCALE:	ENGINEERING ID:	SHEET 1 OF 1	
NTS	000000		