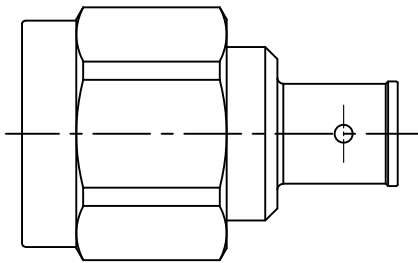


# CABLE ASSEMBLY INSTRUCTIONS

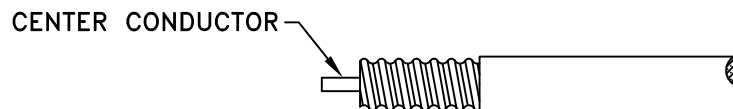
RFN-NMDCP-HPL

MAIN BODY

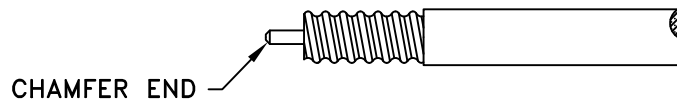
SPACER



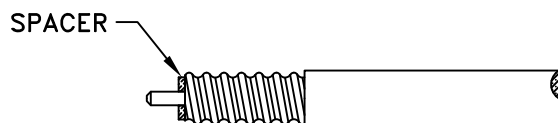
STEP 1



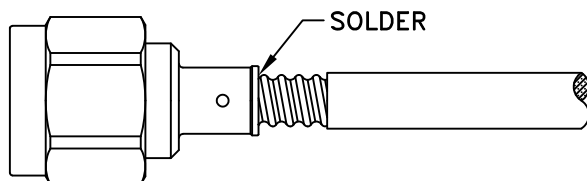
STEP 2



STEP 3



STEP 4



Step 1: Cut end of cable evenly. Use trim tool to strip cable to dimensions shown on connector outline drawing. All cuts are to be clean and square. Do not nick center conductor when cutting.

Step 2: Chamfer conductor's end with a de-burring chamfer tool to break sharp edges for smooth entry into rear contact.

Step 3: Slide spacer onto cable center conductor as shown.

Step 4: Insert cable into main connector holding body stationary. Solder cable outer conductor to connector body.

RFN-NMDCP-HPL AP.DWG

*RF CONNECTORS*

05/02/21

7610 Miramar Road, San Diego, CA 92126-4202 - (858) 549-6340  
(800) 233-1728 - Fax (858) 549-6345 E-mail: [rfi@rfindustries.com](mailto:rfi@rfindustries.com) - [www.rfindustries.com](http://www.rfindustries.com)

CZ