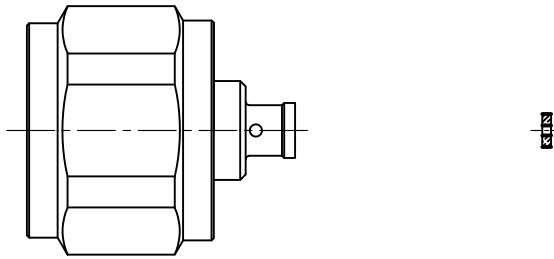


CABLE ASSEMBLY INSTRUCTIONS

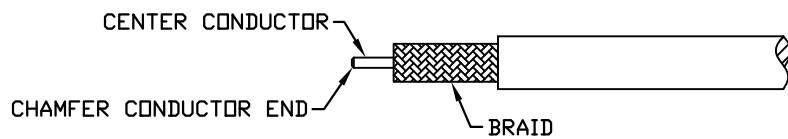
RFN-NMDCP-SR2

MAIN BODY

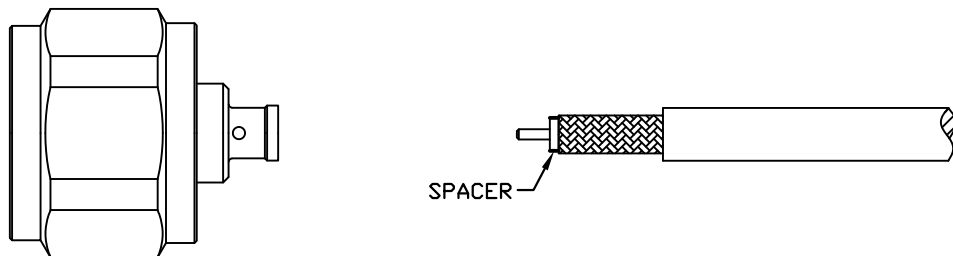
SPACER



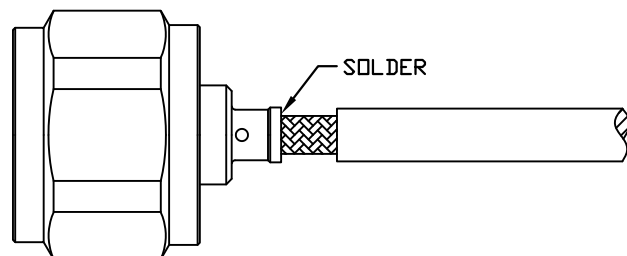
STEP 1



STEP 2



STEP 3



Step 1: Cut end of cable evenly. Strip cable to dimensions shown on connector outline drawing. All cuts are to be clean and square. Do not nick center conductor when cutting. Chamfer conductor's end with a de-burring chamfer tool to break sharp edges for smooth entry into rear contact.

Step 2: Slide spacer onto cable center conductor as shown.

Step 3: Insert cable into connector holding body stationary. Solder cable braid to connector body.

RFN-NMDCP-SR2 AP.DWG

RF CONNECTORS

05/02/21

7610 Miramar Road, San Diego, CA 92126-4202 - (858) 549-6340
(800) 233-1728 - Fax (858) 549-6345 E-mail: rfi@rfindustries.com - www.rfindustries.com

CZ