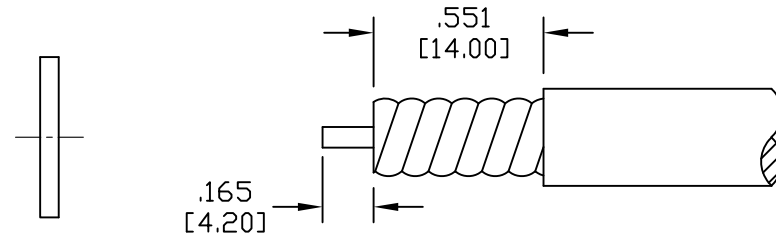
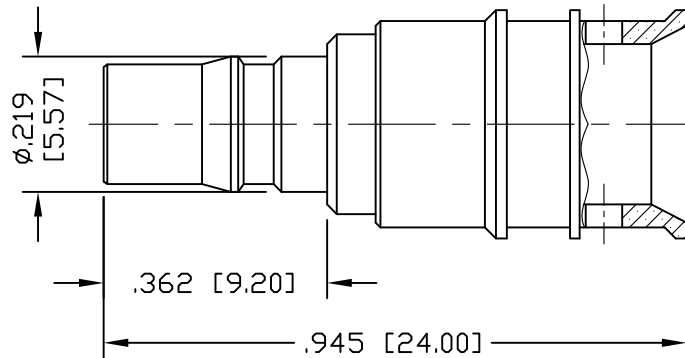


PART NO.		ROA-QFDCP-HPL		
REV	DESCRIPTION	DWN	DATE	APPROVED
-	ENGINEERING RELEASE	CZ	08/11/22	JDMc



RECOMMENDED STRIPPING DIMENSIONS
SCALE 2:1

SPECIFICATIONS:

IMPEDANCE: 50 Ohms
 FREQUENCY RANGE: 0-6 GHz
 3rd ORDER IM: $\leq -155\text{dBc}$ @ 700 MHz & 1900 MHz
 3rd ORDER IM TEST METHOD: 2x43dBm CARRIERS
 VSWR: ≤ 1.15 @ 3 GHz
 WORKING VOLTAGE: 250 VRMS
 INSULATION RESISTANCE: 5000 M Ω
 TEMPERATURE RANGE: -65°C TO 165°C
 SPP-250-LLPP, SPO-250, SCF14-50J, SPF-250,
 FSJ1-50A, SCF14-50J, PTS1-50-P, TFT-401, EC1-50-HF CABLE

4	CONTACT	1	BeCu	SILVER
3	SPACER	1	PTFE	NATURAL
2	INSULATOR	1	PTFE	NATURAL
1	BODY	1	BRASS	CuSnZn
#	DESCRIPTION	QTY	MATERIAL	FINISH

CUSTOMER OUTLINE DRAWING	
ALL DIMENSIONS ARE REFERENCE ONLY	
UNLESS OTHERWISE SPECIFIED: DIMENSIONS ARE IN INCHES AND [MILLIMETERS]	
DRAWN C. ZUÑIGA	08/11/22
CHECKED	
ORJ DRAWN C. ZUÑIGA	08/11/22

RoHS COMPLIANT

PROPRIETARY AND CONFIDENTIAL
 THIS DRAWING CONTAINS
 INFORMATION PROPRIETARY TO
 RF INDUSTRIES, ANY
 UNAUTHORIZED USE OF THIS
 DRAWING IS EXPRESSLY
 PROHIBITED WITHOUT WRITTEN
 PERMISSION FROM RF
 INDUSTRIES. ANY VIOLATION IS
 PUNISHABLE UNDER U.S.
 COPYRIGHT LAWS.

RFconnectors
 DIVISION OF RF INDUSTRIES, LTD. (858) 549-6345 FAX

RFINDUSTRIES.COM
 7610 MIRAMAR RD.
 SAN DIEGO, CA 92126
 (858) 549-6340

QMA FEMALE
 CAPTIVE PIN - DIRECT SOLDER

DWG # **RQA-QFDCP-HPL**

CABLE GROUP HPL	CONTROL # 000000	SCALE NTS	FORMAT A	SHEET 1 OF 1	REVISION -
--------------------	---------------------	--------------	-------------	-----------------	---------------