

NOTES: UNLESS OTHERWISE SPECIFIED

1. 900 um BREAKOUT.
 - 1.1. FOR USE WITH TIGHT-BUFFER CABLE ASSEMBLIES.
2. C ENTERPRISES ENGINEERING STANDARDS APPLY.
3. WHEN PULLING EYE REQUESTED, CONNECTORS AND SUBUNITS WILL BE STAGGERED BY DEFAULT.
 - 3.1. REFER TO STANDARDS AND C-PULLING-EYE DRAWINGS FOR DETAILS.
4. 12 CONNECTORS SHOWN DUE TO SPACE CONSTRAINTS.
5. LC CONNECTOR SHOWN FOR REFERENCE ONLY.
6. HEAT SHRINK.
- 6.1. ARAMID YARN SECURED TO CABLE JACKET UNDER ADHESIVE HEAT SHRINK FOR PULLING EYE SUPPORT.
7. NON-SUBUNITIZED CABLE: 2-24 FIBERS.

REV	ECR	DESCRIPTION	BY	DATE	CHECKED
A	-	INITIAL RELEASE	K.T.	05/18/2016	A.J.

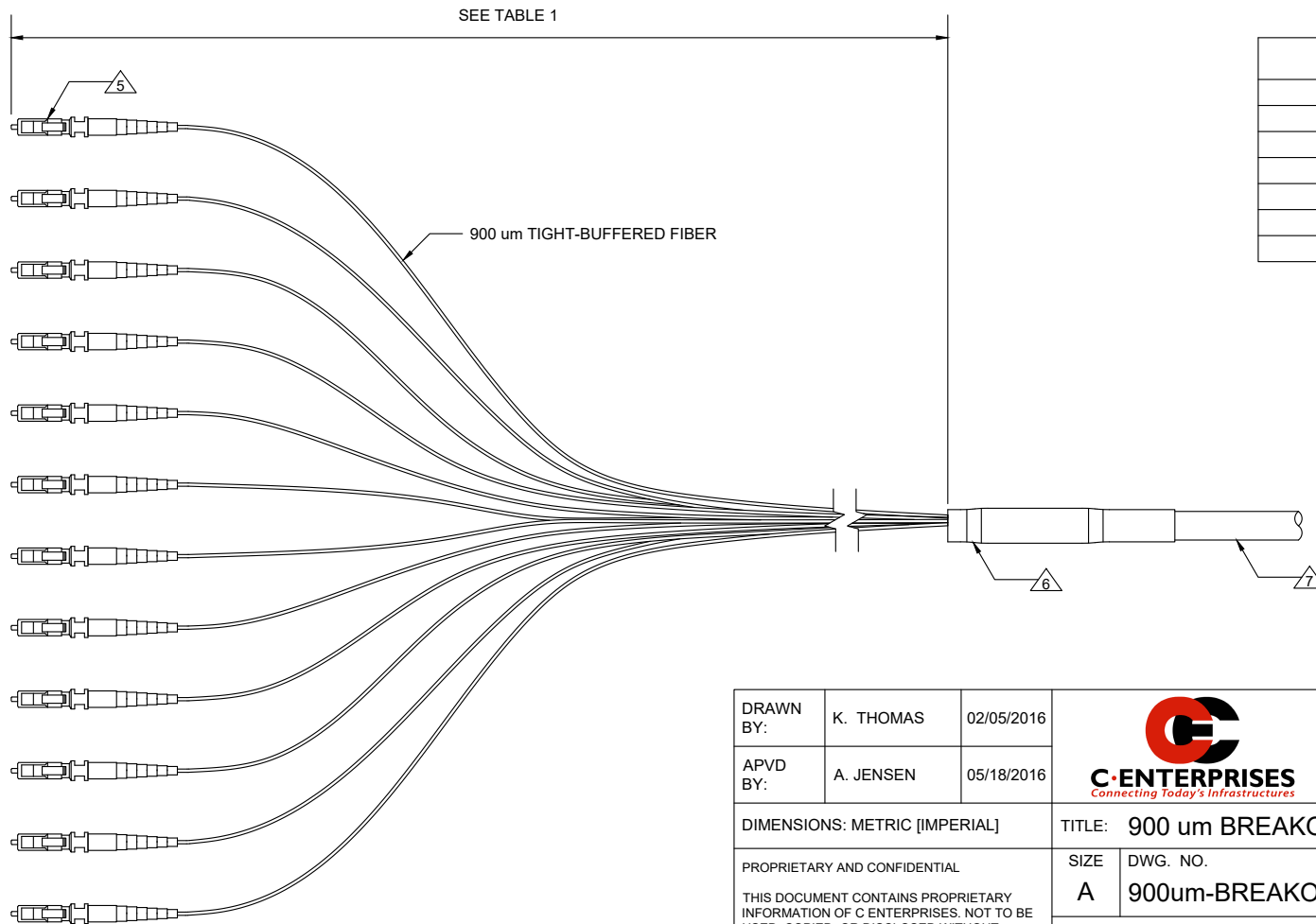



TABLE 1 BREAKOUT LENGTH
12 in
18 in
24 in [DEFAULT]
36 in
48 in
1 M
CUSTOM

DRAWN BY:	K. THOMAS	02/05/2016	 C-ENTERPRISES <i>Connecting Today's Infrastructures</i>	C ENTERPRISES 2445 CADES WAY VISTA CA 92081 760-599-5111
APVD BY:	A. JENSEN	05/18/2016		
DIMENSIONS: METRIC [IMPERIAL]			TITLE: 900 um BREAKOUT	
PROPRIETARY AND CONFIDENTIAL THIS DOCUMENT CONTAINS PROPRIETARY INFORMATION OF C ENTERPRISES. NOT TO BE USED, COPIED, OR DISCLOSED WITHOUT WRITTEN PERMISSION. ALL RIGHTS RESERVED.			SIZE A	DWG. NO. 900um-BREAKOUT
			SCALE: NOT TO SCALE	REV A
			SHEET 1 OF 1	