

NOTES: UNLESS OTHERWISE SPECIFIED

1. C-BREAK 5: 24 FIBERS: 8 FIBERS IN 3 FURCATION TUBES.
 - 1.1. FIBERS IN GROUPS OF 24 CONFIGURED TO 3 MTP 12 FIBER ARRAY CONNECTORS WITH 8 FIBERS EACH.
 2. C ENTERPRISES ENGINEERING STANDARDS APPLY.
 3. WHEN PULLING EYE REQUESTED, CONNECTORS AND SUBUNITS WILL BE STAGGERED BY DEFAULT.
 - 3.1. CONNECTORS STAGGERED BY 1 INCH INCREMENTS.
 - 3.2. CONNECTOR STAGGER ALTERNATES BY INCREASING AND DECREASING FROM DEFINED BREAKOUT LENGTH.
- ▲4 MTP FEMALE CONNECTOR SHOWN FOR REFERENCE ONLY.
 ▲5 LABEL LEG NUMBER.
 ▲6 C-BREAK. SEE TABLE 3 FOR OVERALL DIAMETER.
 ▲7 HEAT SHRINK FOR STRAIN RELIEF.

REV	ECR	DESCRIPTION	BY	DATE	CHECKED
A	-	INITIAL RELEASE	K.T.	05/12/2016	A.J.
A.1	-	STAGGERED END ADDED.	K.T.	06/21/2016	A.J.

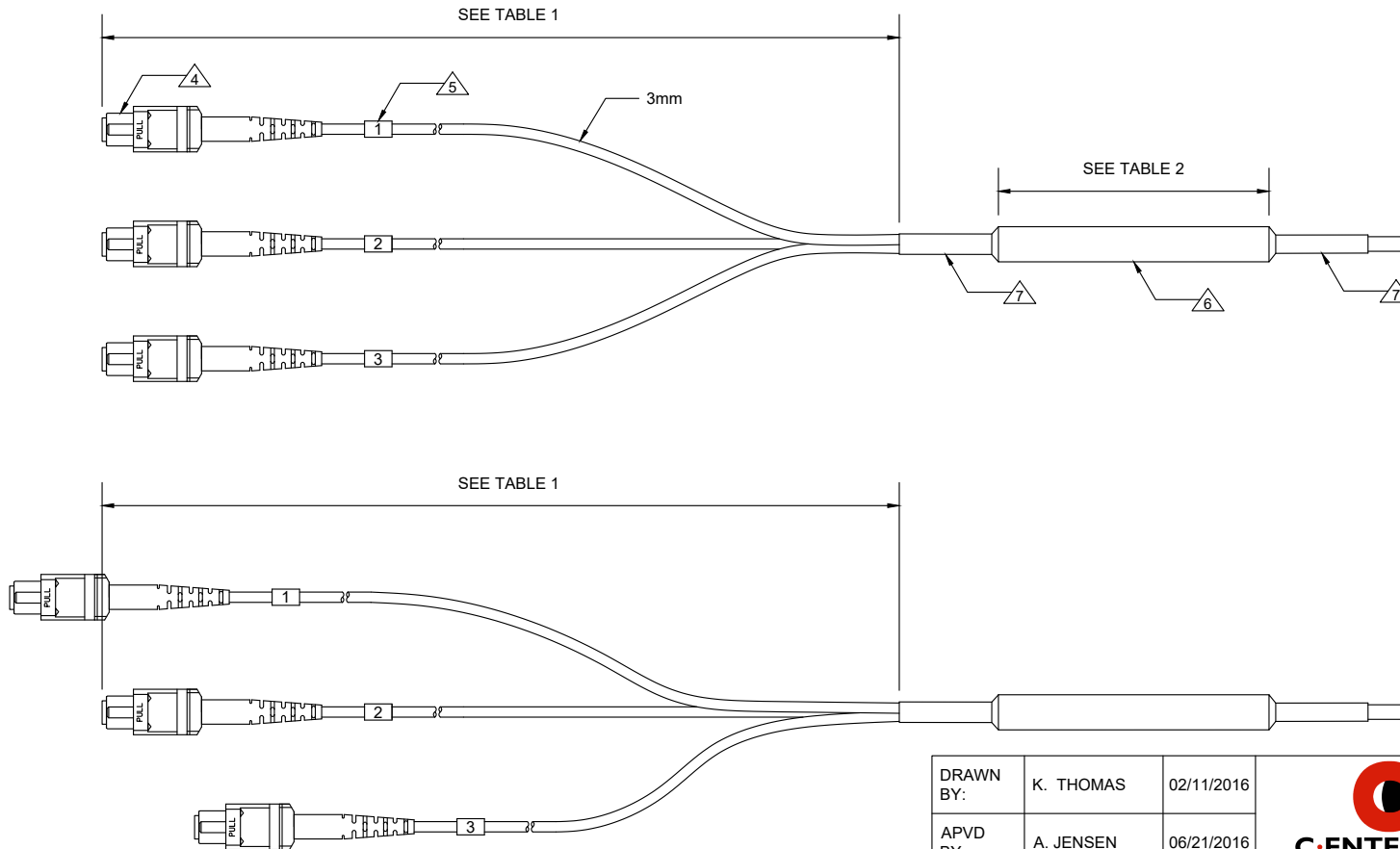



TABLE 1 BREAKOUT LENGTH	
12 in	
18 in	
24 in [DEFAULT]	
36 in	
48 in	
1 M	
CUSTOM	

TABLE 2 C-BREAK LENGTH	
250 um COATED FIBERS	
LENGTH	FIBER COUNT
3 in	24

TABLE 3 C-BREAK OVERALL DIAMETER			
FIBERS	MIC	IN / OUT	OSP
24	1/2 in	TBD	TBD

WITH STAGGERED CONNECTORS

DRAWN BY:	K. THOMAS	02/11/2016	 C-ENTERPRISES <i>Connecting Today's Infrastructures</i>	C ENTERPRISES 2445 CADES WAY VISTA CA 92081 760-599-5111	
APVD BY:	A. JENSEN	06/21/2016		TITLE: C-BREAK-BK5	
DIMENSIONS: METRIC [IMPERIAL]			SIZE A	DWG. NO. C-BREAK-BK5	REV A.1
PROPRIETARY AND CONFIDENTIAL THIS DOCUMENT CONTAINS PROPRIETARY INFORMATION OF C ENTERPRISES. NOT TO BE USED, COPIED, OR DISCLOSED WITHOUT WRITTEN PERMISSION. ALL RIGHTS RESERVED.			SCALE: NOT TO SCALE		SHEET 1 OF 1