

NOTES: UNLESS OTHERWISE SPECIFIED

1. C-BREAK 900: 900 um BREAKOUT.
  - 1.1. BREAKOUT KNUCKLE ON EACH CABLE SUBUNIT.
  - 1.2. BREAKOUT WITH ONE FIBER PER 900 um FURCATION TUBING.
2. C ENTERPRISES ENGINEERING STANDARDS APPLY.
3. WHEN PULLING EYE REQUESTED, CONNECTORS AND SUBUNITS WILL BE STAGGERED BY DEFAULT.
  - 3.1. REFER TO STANDARDS AND C-PULLING-EYE DRAWINGS FOR DETAILS.
4. CONNECTORS SHOWN FOR ONE SUBUNIT DUE TO SPACE CONSTRAINTS.
5. LC CONNECTOR SHOWN FOR REFERENCE ONLY.
6. C-BREAK. OVERALL DIAMETER: 3/8 in.
7. HEAT SHRINK FOR STRAIN RELIEF.
8. LABEL LEG NUMBER.
9. SUBUNIT

REV	ECR	DESCRIPTION	BY	DATE	CHECKED
A	-	INITIAL RELEASE	J.C.	06/23/2011	-
B	-	DRAWING UPDATE & FORMAT CHANGE. BLOCK UPDATE.	K.T.	05/18/2016	A.J.

SEE TABLE 1

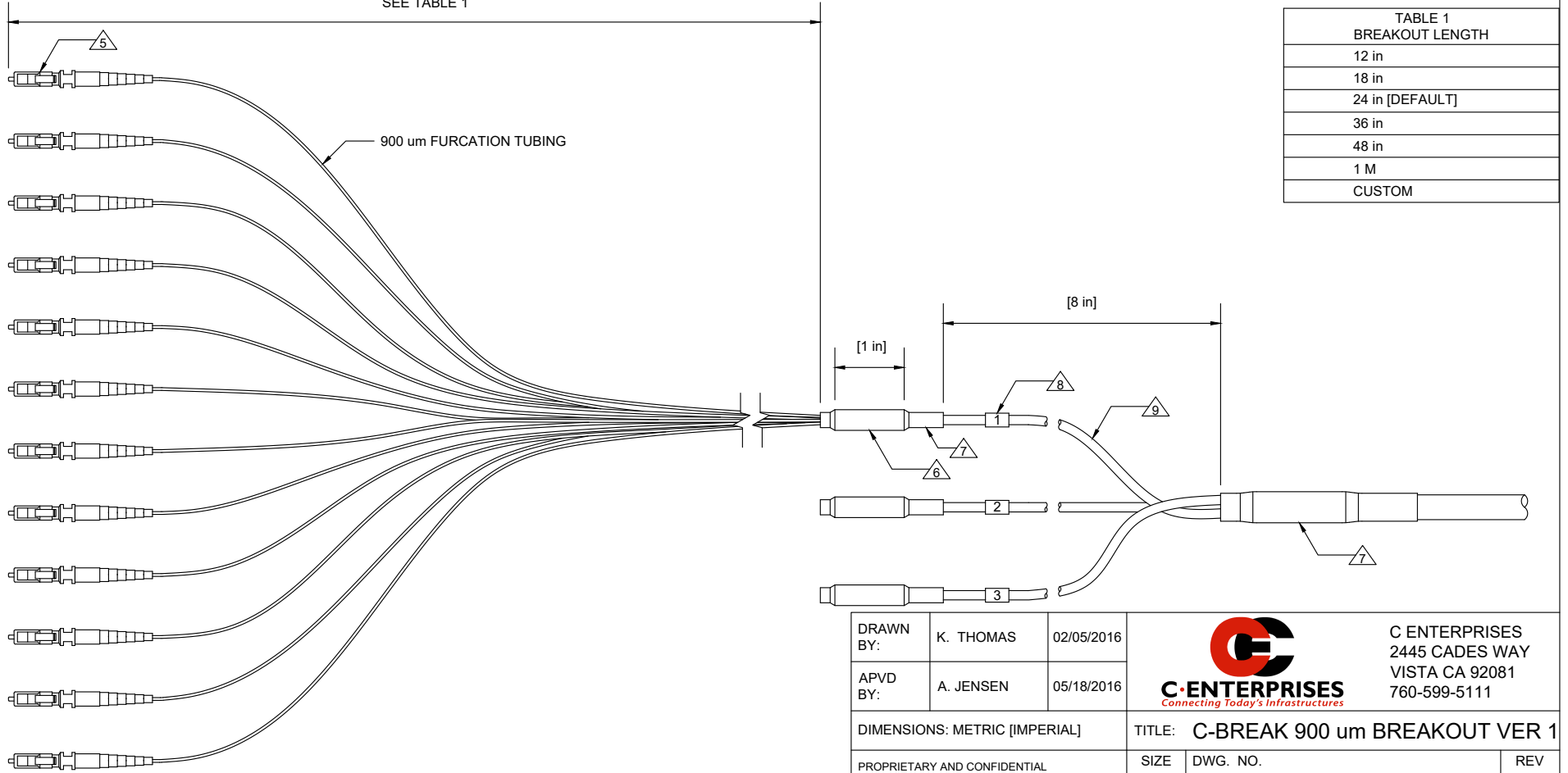


TABLE 1 BREAKOUT LENGTH
12 in
18 in
24 in [DEFAULT]
36 in
48 in
1 M
CUSTOM

DRAWN BY:	K. THOMAS	02/05/2016
APVD BY:	A. JENSEN	05/18/2016



C ENTERPRISES  
2445 CADES WAY  
VISTA CA 92081  
760-599-5111

DIMENSIONS: METRIC [IMPERIAL]		TITLE: C-BREAK 900 um BREAKOUT VER 1	
PROPRIETARY AND CONFIDENTIAL	SIZE A	DWG. NO. C-BREAK-900-VER1	REV B
THIS DOCUMENT CONTAINS PROPRIETARY INFORMATION OF C ENTERPRISES. NOT TO BE USED, COPIED, OR DISCLOSED WITHOUT WRITTEN PERMISSION. ALL RIGHTS RESERVED.		SCALE: 1 TO 2	SHEET 1 OF 1