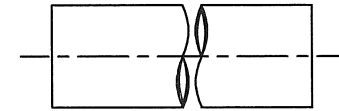
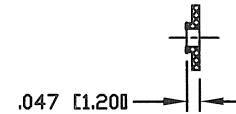
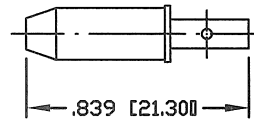
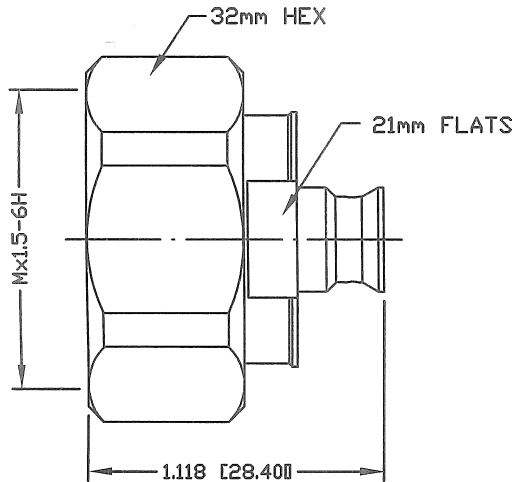


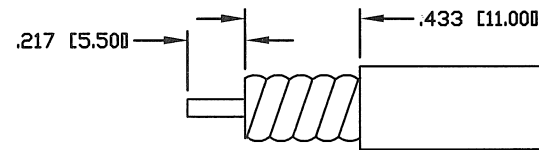
PART NO.

**RFD-1601-HPL**

REV	DESCRIPTION	ECO/ECN	DATE	APPROVED
A	CHANGED CONNECTOR DESIGN & SPECS	1030	03/15/24	JDM

**SPECIFICATIONS:**

INTERFACE: IEC 61169-4  
 IMPEDANCE: 50 Ohms  
 FREQUENCY RANGE: 0-7.5 GHz  
 3rd ORDER IM:  $\leq -155$  dBc @ 700 MHz & 1900 MHz  
 3rd ORDER IM TEST METHOD: 2x43 dBm CARRIERS  
 VSWR: 1.15  
 INSERTION LOSS: 0.1 dB MAX  
 DIELECTRIC WITHSTANDING VOLTAGE: 2000V/AC  
 INSULATION RESISTANCE: 10K M $\Omega$   
 TEMPERATURE RANGE: -40°C to 85°C  
 ENVIRONMENTAL/COMPLIANCE: IP68 MATED  
 DURABILITY: 500 CYCLES  
 FOR SPP-250-LLPP, SPO-250, SCF14-50J, SPF-250,  
 FSJ1-50A, PTS1-50-P, TFT-401, EC1-50-HF



RECOMMENDED STRIPING DIMENSIONS

#	DESCRIPTION	QTY	MATERIAL	FINISH
6	COUPLING NUT	1	BRASS	CuSnZn
5	RETAINING RING	1	BeCu	CuSnZn
4	O-RING	1	SILICONE	RED
3	PIN	1	BRASS	SILVER
2	INSULATOR	1	PTFE	NATURAL
1	BODY	1	BRASS	CuSnZn

CUSTOMER OUTLINE DRAWING	
ALL DIMENSIONS ARE REFERENCE ONLY	
UNLESS OTHERWISE SPECIFIED: DIMENSIONS ARE IN INCHES AND [MILLIMETERS]	
DRAWN C. ZUÑIGA	03/15/24
CHECKED	
ORJ DRAWN C. ZUÑIGA	02/20/14

**RoHS  
COMPLIANT**

PROPRIETARY AND CONFIDENTIAL  
 THIS DRAWING CONTAINS  
 INFORMATION PROPRIETARY TO  
 RF INDUSTRIES, ANY  
 UNAUTHORIZED USE OF THIS  
 DRAWING IS EXPRESSLY  
 PROHIBITED WITHOUT WRITTEN  
 PERMISSION FROM RF  
 INDUSTRIES. ANY VIOLATION IS  
 PUNISHABLE UNDER U.S.  
 COPYRIGHT LAWS.

**RFconnectors** RFINDUSTRIES.COM  
 (858) 549-6340  
 RF@RFINDUSTRIES.COM  
 DIVISION OF RF INDUSTRIES, LTD. SAN DIEGO, CALIFORNIA

7/16 DIN PLUG					
DIRECT SOLDER FOR 1/4" SUPERFLEX CABLE					
DWG #					
<b>RFD-1601-HPL</b>					
CABLE GROUP	CONTROL #	SCALE	FORMAT	SHEET	REVISION
HPL	000000	NTS	A	1 OF 1	A