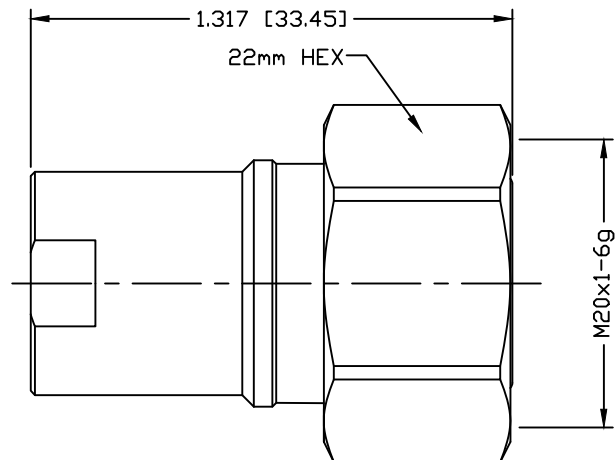


PART NO.

**PT-4000-145LP**

REV	DESCRIPTION	DWN	DATE	APPROVED
A	PART NUMBER CHANGED	CZS	01/10/17	JDMc

SPECIFICATIONS:

IMPEDANCE: 50 Ohms

FREQUENCY RANGE: 0-3 GHz

VSWR: &lt;1.15

DIELECTRIC WITHSTANDING VOLTAGE: 750V/AC

INSULATION RESISTANCE: 5K M Ohms

TEMPERATURE RANGE: -40°C TO 155°C

MECHANICAL DURABILITY: 500 CYCLES

CUSTOMER  
OUTLINE DRAWINGALL DIMENSIONS  
ARE REFERENCE ONLYUNLESS OTHERWISE SPECIFIED:  
DIMENSIONS ARE IN INCHES  
AND [MILLIMETERS]DRAWN  
C. ZUNIGA 01/10/17  
CHECKEDORJ DRAWN  
C. ZUNIGA 06/14/16**RoHS  
COMPLIANT**PROPRIETARY AND CONFIDENTIAL  
THIS DRAWING CONTAINS  
INFORMATION PROPRIETARY TO  
RF INDUSTRIES. ANY  
UNAUTHORIZED USE OF THIS  
DRAWING IS EXPRESSLY  
PROHIBITED WITHOUT WRITTEN  
PERMISSION FROM RF  
INDUSTRIES. ANY VIOLATION IS  
PUNISHABLE UNDER U.S.  
COPYRIGHT LAWS.**RFconnectors**  
DIVISION OF RF INDUSTRIES, LTD.7610 MIRAMAR RD.  
SAN DIEGO, CA 92126  
(858) 549-6340  
(858) 549-6345 FAX**UNIDAPT TO 4.3-10 PLUG  
ADAPTER**

SIZE	CABLE GROUP	DWG NO.	REV
A	N/A	<b>PT-4000-145LP</b>	A
SCALE:	ENGINEERING ID:	SHEET 1 OF 1	
NTS	000000		

#	DESCRIPTION	QTY	MATERIAL	FINISH
7	COUPLING NUT	1	BRASS	WHITE BRONZE
6	O-RING	1	SI RUBBER	----
5	SPACER	1	PTFE	----
4	RETAINING RING	1	BRASS	WHITE BRONZE
3	CONTACT	1	BeCu	SILVER
2	INSULATOR	1	PTFE	----
1	BODY	1	BRASS	WHITE BRONZE