

# CONCEALMENT SHROUDS

## PRODUCT SPECIFICATION - LINE CARD



SPECIFICATIONS	AF000140	AF000343	AF000366	AF-MP262	AF-MP218	AF-MP202	AF-MP147	AF000380
<b>MECHANICAL PROPERTIES</b>								
Pole Location	Mid-Pole							Pole Top
Size, cu ft	2.8	8.2	10	26.2	21.8	20.2	14.7	Varies
Dimensions, in	35H x 15.5W x 9D	42H x 24W x 14D	40H x 24W x 18D	71H x 29W x 22D	60H x 28.5W x 22D	69H x 23W x 22D	48H x 24W x 22D	60 to 90H x 18 to 24D
Number of Radios	Up to 4 (typ.)	Up to 6 (typ.)	Up to 6 (typ.)	Please contact RFI for details based on your specific configuration.				3-12 Small Cell (typ.) 3-9 mmWave (typ.)
Weight, lb	45	75	Please contact RFI for details.					45 to 75
Pole Mount Attachment	Secures to poles using customer-supplied SS bands			Secures to poles using customer-supplied SS bands and line-drilled through-holes for carriage bolts				Bracket Assembly; Gussets
Pole Types	Wood or Metal							
Material	ABS Plastic			Aluminum				Patented Lightweight Fabric
Colors	Standard colors are available, as well as the option for custom colors							
<b>ELECTRICAL PROPERTIES</b>								
Frequency Ranges	FR1	FR1, FR2	FR1	FR1, FR2	FR1, FR2	FR1, FR2	FR1, FR2	FR1, FR2
Operating Temp. Range, C*	Min -30° to Max 45° (typ.)							
Storage Temp. Range, C*	Min -40° to Max 70° (typ.)							
Smart Fan Technology	Included							
<b>INSTALLATION</b>								
Power/Cable Routing	Rear EMT connection cutouts	Bottom EMT connection cutouts	Rear EMT connection cutouts	EMT connection cutouts	EMT connection cutouts	EMT connection cutouts	EMT connection cutouts	Inside or outside center shaft
Pole Types	Hollow utility poles	Solid or hollow utility poles	Hollow utility poles	Solid or hollow utility poles				
<b>SERVICEABILITY</b>								
Security	Latch & Key Mechanism (Tamperproof)							
Access	Removable Cover	Double Doors	Removable Cover	Hinged Doors	Hinged Doors	Hinged Doors	Hinged Doors	Fabric Zipper
<b>CUSTOMIZATION</b>								
Integrated Solutions	Pre-configured radio equipment kits available; Complete customization available to meet customer-specific applications							
<b>ENVIRONMENTAL</b>								
Enclosure Grade	NEMA 3R	N/A	NEMA 3R	N/A				Extreme UV resistance
<b>APPROVALS</b>								
Carrier	Yes	Yes	Yes					
Municipality	Yes	Yes	Yes					Yes
BABA	Yes	Yes						

**AF000140**

*Mid-Pole Small Cell Concealment Shroud*

2.8 cu ft · Vented NEMA 3R

Up to 4 Radios · FR1

35"H × 15.5"W × 9"D · 45 lb



The AF000140 is a compact mid-pole shroud designed for small cell deployments on wood or metal utility poles. Its RF-transparent ABS housing accommodates up to four radios while maintaining a low-profile 2.8 cu ft footprint. A vented NEMA 3R enclosure protects equipment across a wide operating range, while the removable cover enables fast field servicing and radio swap or upgrade without specialized tools. Rear EMT connection cutouts route power, RF cabling, and fiber cleanly through hollow utility poles. Carrier and municipality approved, and BABA compliant. Available in grey, black, brown, green, and light green to meet local specifications.

**AF000343**

*Mid-Pole Small Cell Concealment Shroud*

8.2 cu ft · Vented, Hinged Doors & Top

Up to 6 Radios · FR1, FR2

42"H × 24"W × 14"D · 75 lb



The AF000343 is a mid-pole shroud built for larger small cell deployments requiring up to six radios in a 8.2 cu ft aluminum enclosure. Hinged double doors and a hinged top provide easy, wide-open access for installation and servicing. Bottom EMT connection cutouts accommodate both solid and hollow utility poles, with rear panel mount RF connectors available for solid pole configurations. The chassis features multiple fixing points for configurable equipment bracketing and an optional power distribution unit. Secures to poles via customer-supplied SS bands and line-drilled carriage bolts for added stability. Carrier and municipality approved, and BABA compliant. Available in black and brown.

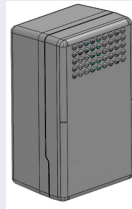
**AF000366**

*Mid-Pole Small Cell Concealment Shroud*

10 cu ft · Vented NEMA 3R

Up to 6 Radios · FR1

40"H × 24"W × 18"D



The AF000366 steps up capacity with a 10 cu ft vented NEMA 3R enclosure that houses up to six radios on wood or metal utility poles. Its RF-transparent ABS housing supports interior antenna applications, while the removable cover provides straightforward field access for servicing and radio swap or upgrade. Rear EMT connection cutouts route power, RF cabling, and fiber cleanly through hollow utility poles, and the unit secures via customer-supplied SS bands. Carrier and municipality approved, and BABA compliant. Available in grey, black, brown, and green to meet local specifications.

**AF-MP Series**

*Multi-Tenant Mid-Pole · AF-MP147/202/218/262*

4.7-26.2 cu ft · Aluminum Enclosure

Up to 6 Radios · FR1, FR2

Hinged Doors · Universal Pole Mount Included



The AF-MP Series is RFi's rugged, all-aluminum multi-tenant shroud line, purpose-built for deployments requiring maximum radio density on a single pole. Available in four sizes — AF-MP147, AF-MP202, AF-MP218, and AF-MP262 — the series scales from 14.7 to 26.2 cu ft to accommodate up to six radios per enclosure. Hinged doors provide wide-open field access, while EMT connection cutouts support both solid and hollow utility pole installations. A universal pole mount bracket is included, and the chassis features multiple mounting points for configurable equipment brackets and an optional power distribution unit. Optional active cooling is available for demanding thermal environments. Available in grey, green, black, and brown, with custom colors upon request.

**AF000380 TruField®**

*Pole-Top · RF Transparent Technology*

60-90"H × 18-24"D · 45-75 lb

FR1, FR2 & mmWave · <0.2 dB Loss

Self-Cleaning Hydrophobic Fabric



TruField® is RFi's flagship pole-top concealment solution and the only patent-protected shroud on the market engineered for true RF transparency. Unlike traditional rigid shrouds that degrade network performance, TruField's proprietary outer shell — developed in partnership with Saint-Gobain — delivers less than 0.2 dB loss at any angle of incidence up to 60°, across low band, mid band (C-Band), and mmWave frequencies. Band agnostic and multi-carrier, multi-tenant ready. The fabric zipper design provides full 360° access with no tools required, while the self-cleaning, hydrophobic material naturally repels water for virtually maintenance-free operation. Municipality approved. Available in grey, black, brown, green, and beige.

**INTEGRATED SOLUTIONS** Kitting · Staging · Custom Integrations

RFi offers turnkey preconfigured connectivity kits engineered to meet any RF, fiber, and power requirement — for any pole or shroud configuration. Our technical team reviews site-specific construction drawings, plumbing diagrams, and RF design specifications to develop a custom kit and bill of materials tailored to your project. Every kit ships as one part number, one shipment, one package with custom labeling — eliminating coordination complexity and reducing the risk of costly field errors. Components arrive at RFi's east or west coast facilities where our team integrates all elements in a controlled environment, staged and ready for pickup. For deployments requiring a fully custom solution, RFi engineers bring expertise across electrical, mechanical, thermal, and RF disciplines to optimize the most robust solution into the smallest footprint.